

## How Timber Can Save The World – Waugh Thistleton Architects:

Build-in-wood is a \$10.1 million project funded by Horizon 2020. The aim of this project is to make timber the first-choice material for constructing large scale buildings.

The project is put together by 21 partners representing the entire build process from materials to the finished product. With large input from universities who will test the system and build prototypes.

### HOW TIMBER CAN SAVE THE WORLD

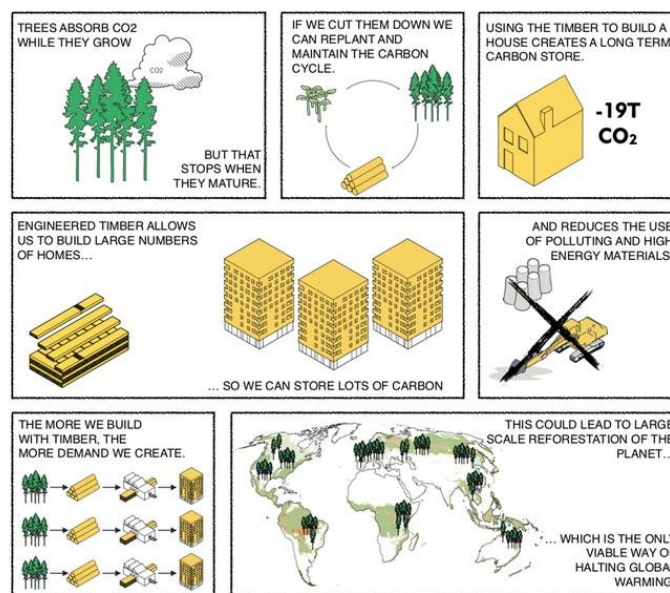


Figure 1.1 *How to build in wood* (Waugh Thistleton, n.d.)

The construction sector is a main contributor to Europe's CO<sub>2</sub> emissions. By increasing the use of timber architecture, a severe impact can be made on the carbon footprint of our buildings, literally removing carbon from the atmosphere, and storing it within buildings and cities.



Figure 1.2 *Build in wood* (Waugh Thistleton, n.d.)

Figure 1.2 - Waugh Thistleton. [n.d.] 'Build in Wood' [online] Available at:  
<http://waughthistleton.com/news/19/10/14/how-build-wood/>. [accessed 12/11/2021].

Figure 1.1 - Waugh Thistleton. [n.d.] "How to 'Build in Wood' [online] Available at:  
<http://waughthistleton.com/news/19/10/14/how-build-wood/>. [accessed 12/11/2021].